

# Nilfisk-ALTO ATTIX - WHY COMPROMISE

*Xtreme Wet & Dry vacuum performance*

## Nilfisk ALTO

*Why Compromise*





# Nilfisk-ALTO ATTIX 9 - INDUSTRIAL CLEANERS

*Superb performance and quality construction - why compromise*



## ATTIX 961-01:

### HIGH CAPACITY AND STAINLESS STEEL CONSTRUCTION

Large stainless steel tank keeps emptying to a minimum, and provides better protection and ensures a longer working life for the unit. Furthermore, the container is both tiltable and removable for convenient handling and emptying.

### DUAL MOTOR POWER

The Dual motor power provide productive cleaning.

Whether it's a factory floor or warehouse loading dock, when spills happen they need to be cleaned quickly and effectively. Apart from the mess, unattended spills can create a hazard that can prove both dangerous and costly. ATTIX 961-01 takes care of both hazardous spills and daily maintenance vacuuming – even in the toughest conditions.

### The Push&Clean filter cleaning system:

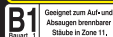
- Keeps suction performance constantly high
- Extends the lifetime of the filter and reduces your costs
- Saves you working time
- Improves the reliability of the machine



▲ ATTIX 961-01



ATTIX 9 Safety  
Vacuums



The Nilfisk-ALTO ATTIX 9 Series includes Safety Vacuum variants that comply with the new European standards for both M-Class and H-Class hazardous dust. You can see the details in the Safety Vacuum brochure.

**Push&Clean**  
Filter Cleaning System





◀ **SIT-DOWN tank emptying**  
*A lever simply lowers and detaches the tank, so that it can be rolled away for emptying.*



**ATTIX 9 SD and ED come with the new improved:  
 FULLY AUTOMATIC FILTER CLEANING**

XtremeClean - fully automatic filter cleaning ensures high efficiency and prevents power loss through restricted airflow. Powerfull airpulses clean the filter automatically and:

- Keeps suction performance constantly high
- Extends the life of the filter and reduce your costs
- Saves you working time without interruptions
- Improves the reliability of the machine

**SIT-DOWN TANK EMPTYING**

There's no need to remove the motor heads for emptying the tank. A lever simply lowers and detaches the tank, so that it can be rolled away for emptying. Alternatively, thanks to the optional Forklift device the container can be fork-lifted to the emptying area.

The tougher the cleaning, the better the vacuum cleaner needs to be. ATTIX 9 SD is capable of fast, productive cleaning of industrial dirt, metal chips and liquid spills. The real edge over the competition can be seen in the practical SIT-DOWN system for emptying the container, and in the special design features that make the work just that much easier.

**POWER THAT IS SEEN, NOT HEARD**

It won't disturb other workers in the area, nor will it be unpleasant to operate with its noise level of just 67 dB(A).

**ONE-PIECE RIGID STEEL FRAME**

This is a built-to-last vacuum cleaner designed to work in the toughest cleaning environments.

When large volumes of dirt and debris need to be vacuumed, the ATTIX 9 ED is the right choice. Specially for building and construction sites, but also for other extreme cleaning tasks.

It is built not only to clean productively in tough cleaning environments, but also to stand up to the knocks and mistreatment that go with this territory.



◀ ATTIX 9 SD



◀ ATTIX 9 ED



Powerful, efficient, silent



# Nilfisk-ALTO ATTIX 7

*Superior suction power, silent operation and innovative features - why compromise*



**Versatile container handling**  
You can tilt the container to empty it, or simply lift it out of the frame when it is time to empty it.

## ERGONOMIC DESIGN

The ultimate in convenience... You will appreciate the robust, comfortable handle for mobility, the efficient tilt or lift-out container, the handy tool tray and the practical suction tube holder.

*Easy to use = high efficiency.*

## SILENT POWER

because the best vacuums are seen and not heard. Friendly for the users, and for other people nearby. Performance that is simply unheard of!

## ROBUST

Robust with a steel frame and stainless steel container.

## HIGH PERFORMANCE

with 2-stage turbines and bypass motors.

## HIGH EFFICIENCY

for users with the tilting and removable container, and optional features like XtremeClean and Automatic On/Off.



▲ ATTIX 791-21



ATTIX 7 Safety  
Vacuums



The Nilfisk-ALTO ATTIX 7 Series includes Safety Vacuum variants that comply with the new European standards for both M-Class and H-Class hazardous dust, and ATEX Type 22 – B1 explosive dust. You can see the details in the Safety Vacuum brochure.





# Special solutions for special applications

*Liquid Vac, Fire Brigade and EasyDisposal - why compromise*



▲ ATTIX 751-61

A logical extension of the high capacity ATTIX 7 series are the Liquid Vac for flood cleanup, the Fire Brigade model for cleanup after fires or road-spills, and the EasyDisposal machines, which allow you to change the disposal bag quickly and get back to your task.

### **Nilfisk-ALTO ATTIX 751-61**

The Liquid-Vac will pick up water at 200 liters per minute and discharge it as much as 9 m higher and 50 m away from the cleanup.

### **Nilfisk-ALTO ATTIX 751-71**

Specifically designed and equipped for Fire Brigade use, cleaning up after highway accidents or fires.

### **Nilfisk-ALTO ATTIX 763-21 ED**

External disposal bags and the XtremeClean system make working with the ED model quick and efficient.



▲ ATTIX 751-71

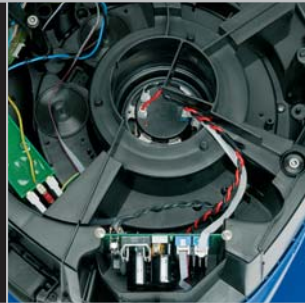


▲ ATTIX 736-21 ED



# Nilfisk-ALTO ATTIX 5 - WET & DRY XTREME SILENCE

*Superior suction power, silent operation and innovative features - why compromise*



- ◀ **The EC-Drive system on ATTIX 5 & 7:**  
 A brushless, ignition-source-free single-phase EC motor that is electronically regulated for precise power control. the EC-Drive motor delivers nearly 6% higher air flow than a Universal motor, for the same energy cost.
- Compact construction
  - 230 V Single phase
  - Extended life-time
  - No sparks or carbon dust from the motor

The ATTIX 5 has been developed for users who need a larger capacity with features that focus on efficiency. Additionally it gives the most silent operation in the Nilfisk-ALTO range ever, ATTIX 5 is the most silent worker in your company!

If you then add superior suction performance, automatic filter cleaning\*, anti-static capability and many other features - you end up with a market leading Wet & Dry solution, perfect for your company - workshop, garage, production, farm etc.

### SILENT OPERATION

The low working sound level is an important feature for a comfortable working environment.

### CABLE HOOK, TUBE\* & ACCESSORY HOLDER

Have everything in one place. It also allows compact storage of the machine after use.

### XTRA BIG WHEELS AND CASTORS

For good mobility even on different or uneven surfaces.

### System



### ERGONOMIC AND STURDY GRIP

The machine can be moved around comfortably - even with a filled container.

### ROUND SWITCH & POWER CONNECTION\*

The switch can be used easily even wearing gloves. It always indicates whether the machine is on or off. The automatic power connection\* allows you to use electric tools.

### SUPERIOR SUCTION PERFORMANCE

The power you need for better cleaning results and less cleaning effort in a shorter cleaning time.



\* Standard on different variants.



ATTIX 5 Safety Vacuums



The Nilfisk-ALTO ATTIX 5 Series includes Safety Vacuum variants that comply with the new European standards for both M-Class and H-Class hazardous dust. You can see the details in the Safety Vacuum brochure.





# Nilfisk-ALTO ATTIX 3 - WET & DRY ON THE MOVE

*A compact and flexible vacuum cleaner solution.  
- why compromise*



▲ **PET-fleece\* filter cartridge**  
Washable and long lasting filter cartridge with high filtration rate for a clean air.

◀ **Push&Clean button\***  
For cleaning the filter just cover the fitting or the tube and press the button.



The ATTIX 3 is the compact end of the ATTIX range. Due to its great performance and high level of mobility it is the perfect solution for craftsmen and other professionals on the move. Bring the ATTIX 3 along and remove every trace of your work quickly and completely... and with a power surplus much higher than you would expect from such a small and compact machine.

#### SILENT OPERATION

The low working sound level is an important feature for a comfortable working environment.

#### CABLE HOOK & ACCESSORY HOLDER

Have everything in one place. It also allows proper storage of the machine after use.

#### CONTAINER DESIGN

The slim design allows easy transport. The container has no seams and no "blind-corners" inside, so emptying is not a problem.

#### ERGONOMIC AND STURDY GRIP

The machine can be moved around comfortably - even with a filled container.

#### ROUND SWITCH & POWER CONNECTION\*

The switch can be used easily even wearing gloves. It always indicates whether the machine is on or off. The automatic power connection\* allows you to use electric tools.

#### SUPERIOR SUCTION PERFORMANCE

The power you need for better cleaning results and less cleaning effort in a shorter cleaning time.



\* Standard on different variants.

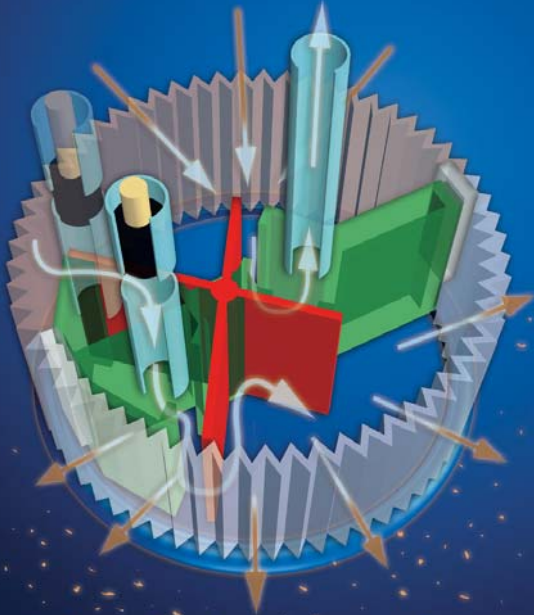


ATTIX 3 Safety  
Vacuums



The Nilfisk-ALTO ATTIX 3 series includes Safety Vacuum variants that comply with all current requirements of the new European standard and employer's liability associations, to deal with hazardous dusts of dust class H & M. You can see the details in the Safety Vacuum brochure.

**Push&Clean**  
Filter Cleaning System



# XtremeClean

*Fully automatic filter cleaning system  
- Just keep on working - why compromise*

Nilfisk-ALTO offers the impressive filter cleaning system called XtremeClean. Extremely efficient and completely automatic. The best filter cleaning system that the market has ever seen. All you have to do is start the vacuum. The filter is immediately cleaned automatically, and every 30 seconds while you work. So there is no need to interrupt your work to clean your filter. You concentrate on your task, and XtremeClean will take care of the filter.

### XtremeClean filter cleaning technology

Advanced technology delivers automatic filter cleaning while you work with full vacuum performance. The XtremeClean technology is based on a valve controlled solution, using reversed air flow to clean the one half of the filter cartridge - while you still work with the other half of the filter cartridge. The valve allows the surrounding air to enter into the container, passing through the filter in the opposite direction. The dirt is blasted off the filter and the suction performance is always high.

The new improved XtremeClean fully automatic filter cleaning system on ATTIX 9 SD and ED is based on a servo motor controlled Y-FLAP, where the filter has the full surface available all the time during operation. This ensures an even longer lifetime, high efficiency and prevents power loss through restricted airflow - without interruptions.

### Powerful air pulses clean the filter gently and:

- Keeps suction performance constantly high
- Extends the life of the filter and reduces your costs
- Saves you working time without interruptions
- Improves the reliability of the machine

### High level of filter filtration due to:

- Servo motor controlled Y-FLAP
- Total filter surface in use during operation
- Automatic continuous filter cleaning
- Secures maximum performance
- Perfect control on cleaning cycles

ATTIX 9 SD & ED





# Push&Clean

*Semi-automatic filter cleaning system*  
*- High suction performance - why compromise*



If your work is with “normal” dirt, you may not need a filter cleaning system... But if you are working with fine dust, you are surely familiar with the dreaded task of cleaning clogged filter cartridges to restore normal suction performance.

With **Push&Clean**, all you have to do to clean the filter, is to cover the fitting or the hose and press the button. Powerful air pulses will clean the filter gently, and you are back to work in no time.

## Push&Clean filter cleaning technology

The Push&Clean technology allows a fast and simple cleaning of the filter cartridge. When you block the fitting for the air inlet or the hose and push the filter cleaning button, the surrounding air enters into the container, passing through the filter cartridge in the opposite direction. The dirt is blasted off the filter and the suction performance is high again. A comfortable and powerful but gentle way of cleaning the filter.

## The Push&Clean filter cleaning system:

- Keeps suction performance constantly high
- Extends the life of the filter and reduces your costs
- Saves you working time
- Improves the reliability of the machine

**Push&Clean**  
 Filter Cleaning System

# ATTIX 9

## - THE FACTS FOR XTREME PERFORMANCE



▲ ATTIX 961-01



▲ ATTIX 965-21 SD XC



▲ ATTIX 963-21 ED

### Technical data:

		ATTIX 961-01	ATTIX 965-21 SD XC	ATTIX 963-21 ED
Air flow rate	l/min.	2x3600	2x3600	2x3600
Vacuum	mbar/KPa	250/25	250/25	250/25
Power (max)	W	2x1500	2x1500	2x1500
Power (IEC)	W	2x1200	2x1200	2x1200
Mains connection	V/~/Hz	230/1~/50-60	230/1~/50-60	230/1~/50-60
Working sound level	dB(A)	67	67	67
Container volume	l	70	50	30
L x W x H	mm	580 x 600 x 970	615 x 690 x 1210	620 x 602 x 1209
Weight w/o accessories	kg	28	35	30
Mains cable	m	10	10	10

### Features:

	ATTIX 961-01	ATTIX 965-21 SD XC	ATTIX 963-21 ED
Filter Cleaning System	Push&Clean	XtremeClean	XtremeClean
Auto On/Off		●	●
Convenience El. socket		●	●
SoftStart	●	●	●
Speed control		●	●
AntiStatic	ready	ready	ready
Cable hook	●	●	●
Tube holder	●	●	●
Tool tray	●	●	●

### Standard Accessories:

	ATTIX 961-01	ATTIX 965-21 SD XC	ATTIX 963-21 ED
Hose (dia x length)	mm x m	Ø 38 x 4	Ø 50 x 4 AS
Curved hand tube		D 38	
Floor nozzle	●		●
Crevice nozzle	●		●
Tool adapter			●
Filter cartridge, washable	PET fleece	PET fleece	PET fleece
Filter bag	1		
Disposal bag		1	1



# ATTIX 7

## - THE FACTS FOR XTREME PERFORMANCE



▲ ATTIX 761-21 XC

▲ ATTIX 791-21 EC

▲ ATTIX 751-11  
ATTIX 751-21

▲ ATTIX 751-61

▲ ATTIX 751-71

▲ ATTIX 763-21 ED

### Technical data:

		ATTIX 761-21 XC	ATTIX 791-21 EC	ATTIX 751-21	ATTIX 751-11	ATTIX 751-61	ATTIX 751-71	ATTIX 763-21 ED
Air flow rate	l/min.	3600	3800	3600	3600	3600	3600	3600
Vacuum	mbar/KPa	230/23	250/25	230/23	230/23	230/23	230/23	230/23
Power (max)	W	1500	1500	1500	1500	1500	1500	1500
Power (IEC)	W	1200	1200	1200	1200	1200	1200	1200
Mains connection	V/~/Hz	230/1~/50-60	230/1~/50-60	230/1~/50-60	230/1~/50-60	230/1~/50-60	230/1~/50-60	230/1~/50-60
Working sound level	dB(A)	57	57	57	57	57	57	57
Container volume	l	70	70	70	70	70	70	30
L x W x H	mm	605 x 580 x 970	605 x 580 x 970	605 x 580 x 970	605 x 580 x 970	605 x 580 x 970	510 x 480 x 875	605 x 580 x 1284
Weight w/o accessories	kg	27	25	25	25	33	31	25
Mains cable	m	7.5	7.5	7.5	7.5	7.5	10	7.5

### Features:

	ATTIX 761-21 XC	ATTIX 791-21 EC	ATTIX 751-21	ATTIX 751-11	ATTIX 751-61	ATTIX 751-71	ATTIX 763-21 ED
Filter Cleaning System	XtremeClean						XtremeClean
Auto On/Off	●	●	●				●
Convenience El. socket				●			
SoftStart	●	●	●	●	●	●	●
Speed control	●	●	●		●	●	●
AntiStatic	●	●	●		●	●	●
Cable hook	●	●	●		●		●
Tube holder	●	●	●		●		●
Tool tray	●	●	●		●	●	●
				ready	ready	ready	

### Standard Accessories:

	ATTIX 761-21 XC	ATTIX 791-21 EC	ATTIX 751-21	ATTIX 751-11	ATTIX 751-61	ATTIX 751-71	ATTIX 763-21 ED
Hose (dia x length)	mm x m	Ø 27 x 3.5	Ø 27 x 3.5	Ø 27 x 3.5	Ø 36 x 4		Ø 36 x 5
Curved hand tube				●		●	●
Extension tube						●	●
Floor nozzle						●	●
Crevice nozzle						●	
Rubber nozzle				●			
Tool adapter	●	●	●				
Filter cartridge, washable	PET fleece	PET fleece	PET fleece	PET fleece			PET fleece
Filter bag	1	1	1	1			
Disposal bag	1						1

# ATTIX 5

## - THE FACTS FOR XTREME PERFORMANCE



▲ ATTIX 560-31 XC

▲ ATTIX 560-21 XC  
ATTIX 560-21 XC  
MOBILE

▲ ATTIX 590-21 EC  
ATTIX 590-21  
CLEAN ROOM

▲ ATTIX 550-21

▲ ATTIX 550-11  
MOBILE

▲ ATTIX 550-01

Technical data:	ATTIX 560-31 XC	ATTIX 560-21 XC	ATTIX 560-21 XC MOBILE	ATTIX 590-21 EC	ATTIX 590-21 CLEAN ROOM	ATTIX 550-21	ATTIX 550-11 MOBILE	ATTIX 550-01
Air flow rate	3600	3600	3600	3800	3800	3600	3600	3600
Vacuum	230/23	230/23	230/23	250/25	250/25	230/23	230/23	230/23
Power (max)	1500	1500	1500	1500	1500	1500	1500	1500
Power (IEC)	1200	1200	1200	1200	1200	1200	1200	1200
Mains connection	230/1~/50-60	230/1~/50-60	230/1~/50-60	230/1~/50-60	230/1~/50-60	230/1~/50-60	230/1~/50-60	230/1~/50-60
Working sound level	57	57	57	59	59	57	57	57
Container volume	45	45	45	45	45	45	45	45
L x W x H	506 x 476 x 655	506 x 476 x 655	506 x 476 x 655	506 x 476 x 655	506 x 476 x 655	506 x 476 x 655	506 x 476 x 655	506 x 476 x 655
Weight w/o accessories	16	16	16	14	14	14	14	14
Mains cable	7.5	7.5	7.5	7.5	7.5	7.5	7.5	7.5

### Features:

Features:	ATTIX 560-31 XC	ATTIX 560-21 XC	ATTIX 560-21 XC MOBILE	ATTIX 590-21 EC	ATTIX 590-21 CLEAN ROOM	ATTIX 550-21	ATTIX 550-11 MOBILE	ATTIX 550-01
Filter Cleaning System	XtremeClean	XtremeClean	XtremeClean					
Auto On/Off	①	●	●	●	●	●		
Convenience El. socket							●	
SoftStart	●	●	●	●	●	●	●	
Speed control	●	●	●	●	●	●		
AntiStatic	●	●	ready	●	●	●	ready	ready
Cable hook	●	●	●	●	●	●	●	●
Tube holder							●	●
Tool tray	●	●	●	●	●	●	●	●

### Standard Accessories:

Standard Accessories:	ATTIX 560-31 XC	ATTIX 560-21 XC	ATTIX 560-21 XC MOBILE	ATTIX 590-21 EC	ATTIX 590-21 CLEAN ROOM	ATTIX 550-21	ATTIX 550-11 MOBILE	ATTIX 550-01
Hose (dia x length)	Ø 27 x 3.5	Ø 27 x 3.5	Ø 36 x 4	Ø 27 x 3.5	Ø 27 x 3.5	Ø 27 x 3.5	Ø 36 x 3	Ø 36 x 3
Curved hand tube			●				●	●
Extension tube			●				●	●
Floor nozzle			●				●	●
Crevice nozzle			●				●	●
Brush nozzle			●					
Tool adapter	●	●		●	●	●		
Folding transportable handle			●				●	
Filter cartridge, washable	PET fleece	PET fleece	PET fleece	PET fleece	PET fleece	PET fleece	PET fleece	PET fleece
Filter bag						1	1	1
Disposal bag	1	1	1	1	1			

① for Electric and Pneumatic tools



# ATTIX 3

## - THE FACTS FOR XTREME PERFORMANCE



▲ ATTIX 360-21



▲ ATTIX 360-11



▲ ATTIX 350-01

### Technical data:

		ATTIX 360-21	ATTIX 360-11	ATTIX 350-01
Air flow rate	l/min.	3600	3600	3600
Vacuum	mbar/KPa	230/23	230/23	230/23
Power (max)	W	1500	1500	1500
Power (IEC)	W	1200	1200	1200
Mains connection	V/~ /Hz	230/1~/50-60	230/1~/50-60	230/1~/50-60
Working sound level	dB(A)	59	59	59
Container volume	l	27	27	27
L x W x H	mm	390 x 380 x 570	390 x 380 x 570	390 x 380 x 570
Weight w/o accessories	kg	10	10	10
Mains cable	m	7.5	7.5	7.5

### Features:

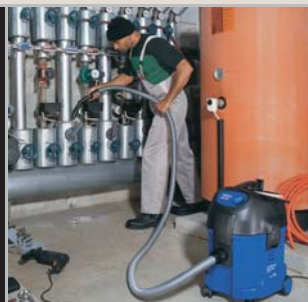
	ATTIX 360-21	ATTIX 360-11	ATTIX 350-01
Filter Cleaning System	Push&Clean	Push&Clean	
Auto On/Off	●		
Convenience El. socket		●	
SoftStart	●		
Speed control	●		
AntiStatic	ready	ready	
Cable hook	●	●	●
Tool tray	●	●	●

### Standard Accessories:

	ATTIX 360-21	ATTIX 360-11	ATTIX 350-01
Hose (dia x length)	Ø 32 x 3	Ø 32 x 3	Ø 32 x 3
Curved hand tube	●	●	●
Extension tube	●	●	●
Floor nozzle	●	●	●
Crevice nozzle	●	●	●
Brush nozzle		●	
Tool adapter	●		
Filter cartridge, washable	PET fleece	PET fleece	PET fleece
Filter bag	1	1	1

# Nilfisk-ALTO OFFERS MORE DEDICATED SOLUTIONS...

*In order to accommodate specific customer needs Nilfisk-ALTO has developed a full range of accessories and accessory sets. You will find more accessories and more sets in the main Nilfisk-ALTO catalogue.*



## Accessories for Nilfisk-ALTO ATTIX



### Filter bags

ATTIX 3	302000449
ATTIX 5	302000527
ATTIX 7	302001484
ATTIX 9	302002892



### Filter Cartridge

ATTIX 3, 5 & 7	302000490
ATTIX 5 & 7 XC, 9	302000751



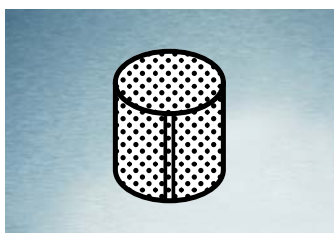
### Disposal bag

ATTIX 3	302000804
ATTIX 5	302000728
ATTIX 7 & 9 SD	302001480



### Cloth filter insert

ATTIX 3	302000606
ATTIX 5 & 7	302000525
ATTIX 9	302002894



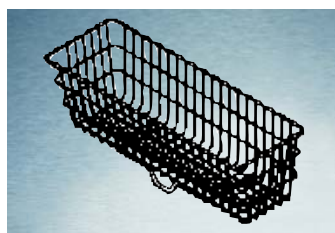
### Filter sieve

ATTIX 3, 5 & 7	15475
ATTIX 9	302002885



### Accessory net

ATTIX 3	302000607
ATTIX 5 & 7	302000524



### Accessory basket

ATTIX 9 SD	302002624
------------	-----------



### Chip basket, metal

ATTIX 7	302001434
ATTIX 9 SD	302001612
ATTIX 9	302003003



### Exhaust air collector

ATTIX 3	302001158
ATTIX 5 & 7	302000522
ATTIX 9 & 9SD	302002621



### Motor cooling air filter

ATTIX 3, 5 & 7	302000491
ATTIX 3, 5 & 7	302000929
ATTIX 9	302002795



### Airbox

ATTIX 3, 5, 7 and 9 (only -21 models)	302001192
--	-----------



### Forklift disposal device

ATTIX 9 SD	302002622
------------	-----------





**Accessory net**  
 For transportation of even more accessories, an accessory net is available and can be mounted on the vac.

**Handle (Folding)**  
 A comfortable way to transport your vac.

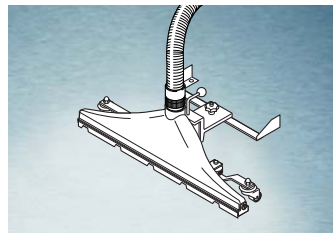
**Exhaust air collector**  
 If you want to get rid of the vacuumed air - just use the exhaust air collector. Can also be used to blow some dirt out of hard-to-reach places.



**Handle, folding**  
 ATTIX 5 302000523



**Extension tubes, stainless steel**  
 ATTIX 3, 5 & 7 15546  
 ATTIX 3, 5 & 7 302000529  
 ATTIX 9 302002888



**Large rolling nozzle**  
 ATTIX 7 & 9 302001481  
 ATTIX 9 SD 302002886



**Floor nozzle**  
 ATTIX 3, 5 & 7 302000259  
 ATTIX 9 302002798  
 ATTIX 9 15343 (dry)  
 ATTIX 9 15344 (wet)



**Animal care set**  
 ATTIX 3, 5, & 7 6095



**Industrial/floor set**  
 ATTIX 3, 5 & 7 63214



**Industrial set, 50mm**  
 ATTIX 3, 5, 7 & 9 63216



**Industrial set, 38mm**  
 ATTIX 3, 5, 7 & 9 302002881



**Workshop set**  
 ATTIX 3, 5 & 7 302000927



**Pipe cleaning set**  
 ATTIX 3, 5, 7 & 9 63215



**Oven cleaning set**  
 ATTIX 3, 5, 7 & 9 14341



**Chip set**  
 ATTIX 3, 5, 7 & 9 61681



# The Nilfisk-ALTO ATTIX series offers so much, that it is easy to find the right machine for your task

Nilfisk-ALTO ATTIX – a range of industrial class wet/dry vacuum cleaners designed for demanding clean-up applications and always with the user in mind.

In demanding cleaning environments, a reliable and well-designed vacuum cleaner is essential. Whether the need is for fast pick-up of either liquid or powder spills, or for regular maintenance cleaning in heavily soiled areas, a ATTIX vacuum will get the job done.

Quality design is a hallmark of all Nilfisk-ALTO machines, and this range is no exception. The close attention to detail and operator convenience can be seen, not only in the sturdy construction, but also in the array of new and improved features. The Push&Clean and XtremeClean filter cleaning system, for example, is a new innovation that retains optimum airflow without losing time on filter cleaning.

The ATTIX range ensures productive, efficient vacuuming in factories, agricultural applications, on construction sites and wherever heavy cleaning is necessary, or where potentially hazardous dust needs to be safely collected.

Nilfisk-ALTO doesn't rely only on its global experience and engineering expertise when bringing products to the market. More importantly, we talk to our customers. We learn from listening.

This is why the ATTIX range of wet/dry industrial vacuums is so effective in meeting the challenges of the most demanding cleaning environments.

- More features at a competitive price level
- Stainless steel containers and robust construction to stand up to tough working conditions
- High performance to ensure fast, productive cleaning results
- Innovative filter cleaning systems
- Tank emptying solutions that simplify the job and save time

The ATTIX range is designed to give better performance with less hassle. – *Why compromise?*

#### Nilfisk-ALTO ATTIX 3

Delivers superior suction power in a compact, easy-to-transport package. Quiet, small and mobile but with the same convincing suction performance as the ATTIX 5. A perfect solution for craftsmen on the move! And with the Push&Clean filter cleaning system, even fine dust and powder won't interrupt your work for more than the few seconds it takes to push the button.

#### Nilfisk-ALTO ATTIX 5

Is the solution for customers with a higher frequency of cleaning, and require more container volume. ATTIX 5 will solve any task with a high degree of efficiency, and models with fully automatic XtremeClean will handle fine dust and powder automatically, while you continue working.

#### Nilfisk-ALTO ATTIX 7

Is the perfect solution for jobs that require high container volume and efficiency. The 70 liter container can be easily emptied by tilting or lifting-off, and the XtremeClean solution allows you to continue working while the filter is cleaned automatically. ATTIX 7 is perfect for the BIG jobs.

#### Nilfisk-ALTO ATTIX 9

Industrial specifications, robust construction, and powerful! That's the definition of ATTIX 9. The ATTIX 9 range is an application driven solution, designed for demanding and constant use in all kind of in wet & dry applications. The allround industrial high performance 2 motor turbine vacuum cleaner with big capacity and easy emptying with the tiltable and removable stainless steel container provide high efficiency and a durable machine with long life time.

#### Nilfisk-ALTO ATTIX 7 & 9 ED

When vacuuming large amounts of debris, just fill up the bag replace and continue. At the end of you cleaning job dispose the bags all at once. Saves time as there is no need for emptying the container.

Nilfisk-ALTO (division of Nilfisk Advance A/S) is the number one professional cleaning equipment company with a turnover of 730 million € and 3800 employees. We are located in all main European countries, US and Asia with our headquarters in Denmark and production facilities in Germany, Denmark, Hungary, Singapore, China, Italy and the US.

We supply quality high pressure washers, vacuum cleaners and floor care equipment to agriculture, automotive and industrial companies, cleaning contractors and private consumers.

Nilfisk-ALTO is a product driven company with focus on innovation and growth. We believe in developing and maintaining long lasting relationships with our customers, suppliers and employees.

No claims can be made on the basis of information or illustrations contained in this catalogue. Subject to alteration of technical data, design and equipment.

**Nilfisk**  
**ALTO**  
*Why Compromise*

Nilfisk-ALTO  
Division of Nilfisk-Advance A/S  
www.nilfisk-alto.com