

# i-mop Basic, Plus & Pro wallchart

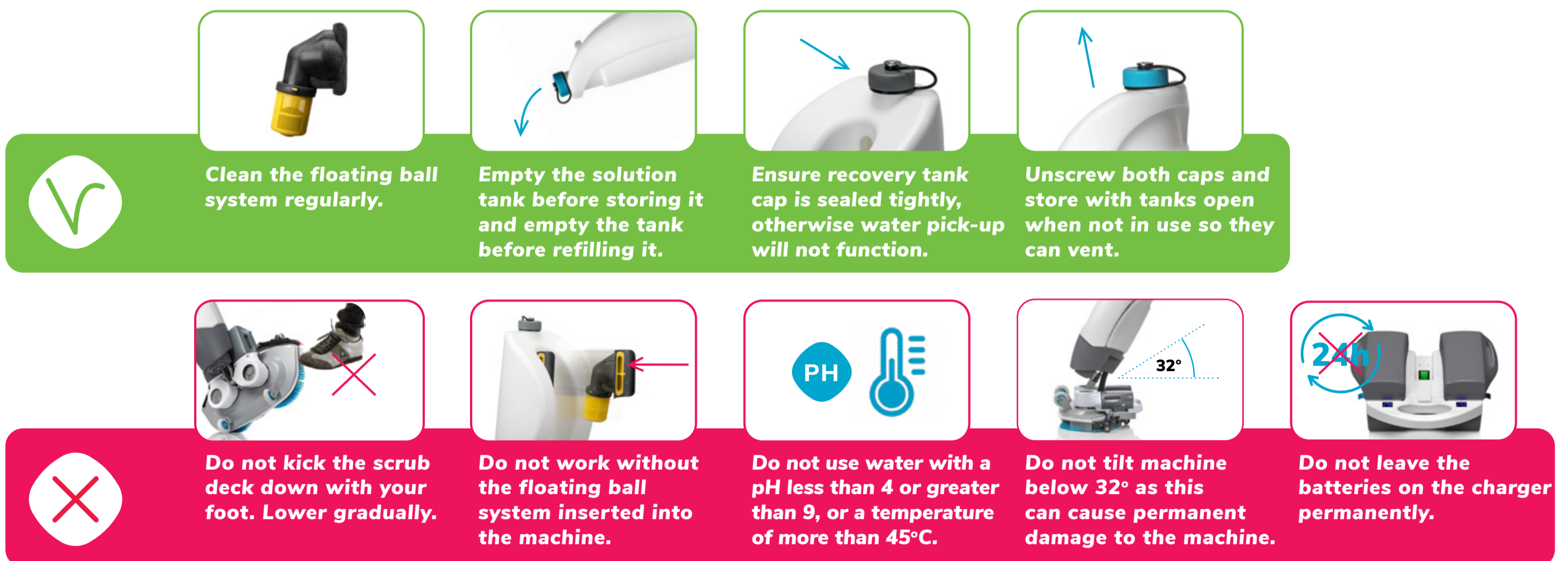
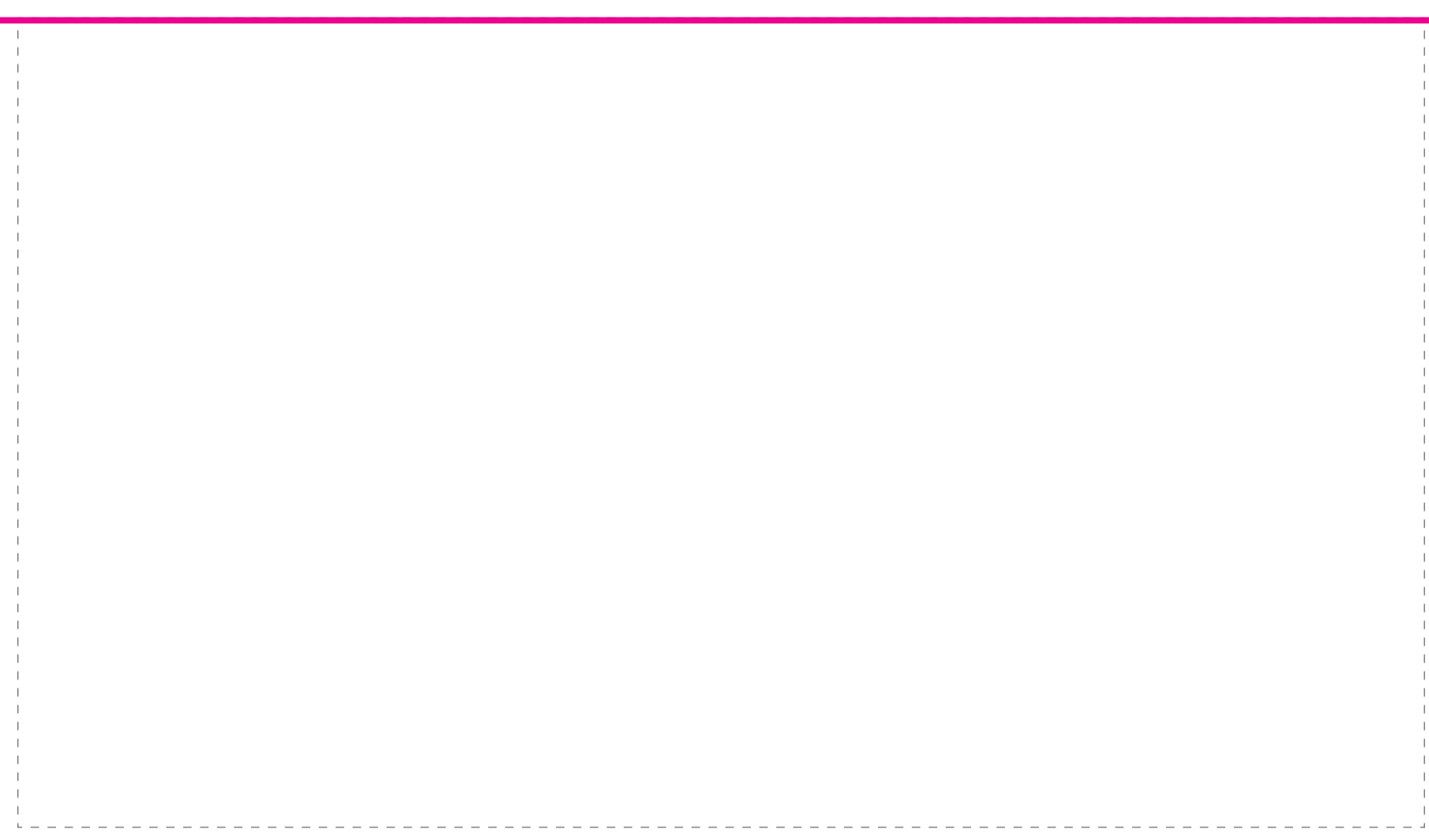


## Operation



## Maintenance and Care

	daily	weekly	monthly
Drain and rinse the solution and recovery tanks with fresh water.	●		
Remove and open the vacuum filter, make sure that it is clean inside by blowing it out or hold it under running water.	●		
Take out the floating ball system from the recovery tank and clean it under running water.	●		
Clean the squeegee blade bracket, the rubbers and suction opening with fresh water and a clean cloth.	●		
Detach the brushes and clean the exposed brush deck with a damp cloth.	●		
Remove and recharge the batteries. If the i-mop is not used regularly, store the charged batteries in a clean and dry place.	●		
Check the rubbers on the squeegee blade for damage or wear and tear. Flip them over or replace them entirely when needed.		●	
Clean the wheels on the squeegee blade, including the bearings if they are clogged.		●	
Take the filter from the solution tank and clean it under running water.		●	
Remove the deflector gently from the machine and clean it.		●	
Clean the exterior of the i-mop with a clean cloth and fresh water.			●
Remove the brushes from the machine and clean the water nozzles at the bottom of the scrub deck.			●
Make sure the batteries are charged monthly. Do not leave the batteries on the charger permanently.			●



## Troubleshooting

### The i-mop does not start

First, make sure the scrub deck is lowered, otherwise the i-mop will not start due to the safety switch. If that does not start the i-mop, remove the battery packs from the machine. Inspect the connectors on the battery and on the machine for any damage or obstruction. Reinsert the batteries and switch on the machine. Make sure that the batteries are charged. Check by inserting them in the charger, recharge when needed or replace with a charged set. If the problem still exists, reset the i-mop according to the reset procedure.

### Poor water recovery

Ensure you have chosen the right cleaning mode and the vacuum motor is running. Check the recovery tank. If full, empty it. Always empty the recovery tank after cleaning or when the solution in the water tank is empty. Inspect both the deflector and the air filter. Clean when needed. Make sure the recovery tank is seated correctly on the machine, and the cap is screwed back on the top of the tank. Inspect the rubbers on the squeegee for any damage or wear and tear. Ensure there is no blockage inside the squeegee blade restricting the airflow.

Ensure all wheels are clean and they can turn freely.

Detach the vacuum hose from the machine and check both the hose and the opening on the machine for blockage. Run water through the hose to remove any blockage.

### Insufficient water flow or no water flow

Check if the solution tank is filled and seated correctly on the machine. Make sure that the right operating mode is selected. Remove the brushes and check the water nozzles on the scrub deck for any obstructions. Empty the solution tank and check the filter. Make sure that it is clean. If the filter is dirty, clean it immediately. Filter should be cleaned at a minimum monthly or more often if required by your circumstances.

### Reset

Make sure that the i-mop is switched off by returning the knob on the control panel to the off position in the middle. Disconnect both battery packs from the machine and hold down the 'water save' button for 30 seconds. Release the button and reinstall both battery packs.